

Napoleon Electric Fireplaces



Looking for the complete package?

CASALOMA EF31H ELECTRIC FIREPLACE



*No tools required...
unpack, plug in and enjoy!*

Shown with optional hammertone pewter operating doors and flush birch cabinet package



Shown with corner birch cabinet package



Shown with corner light oak cabinet package



Shown in custom stone mantel

Options & Accessories

- Decorative pull screen
- Decorative door
- Plug-in hand held remote control

The Casaloma™ electric fireplace imitates the look of a traditional masonry fireplace but with all the convenience of simply plugging it in, sitting back and enjoying the radiant glow! Napoleon's patented FLAMATION™ technology randomly adjusts the flame effect, height & speed creating the illusion of a true wood burning fire. Finely detailed Phazer® logs, glass front and flush face design add to the traditional masonry look and feel. Available as a single unit or complete with a cabinet package in flush design or corner style.

EF31 Exclusive Features

- 5,000 BTU thermostatic heater & fan
- Plugs into any 120V electrical outlet
- Concealed on/off thermostat heater switch
- Random "FLAMATION™" technology automatically modulates flame appearance
- Exclusive PHAZER® log set
- Tempered glass
- Hammertone pewter finish

Specifications

- Certified under Canadian and American National Standards CSA G2.22/UL 1278
- Can be hard wired for permanent installation
- Installs almost anywhere
- 5,000 BTU - 1500 Watt heater

Simply plug the specially designed 1800 watt receiver into a standard 120V wall outlet and then plug the EF31 fireplace into the receiver. Turn the unit on and off with the convenient battery operated hand held remote.



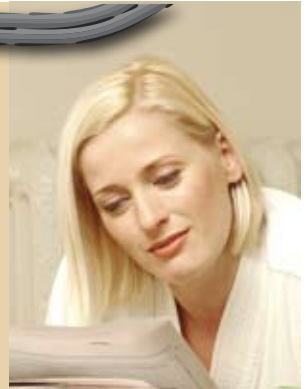
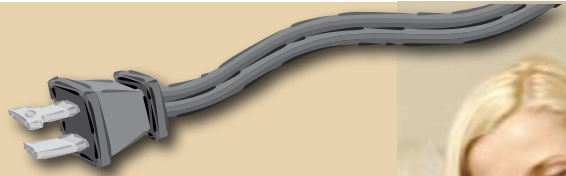
*An irresistible choice
for any house, condo or
apartment*

NAPOLEON
QUALITY FIREPLACES
Award Winning Products

The ultimate enjoyment of a fireplace with one simple switch

ELECTRIC FIREPLACE MODELS EF38 & EF36

*Enjoy your fireplace
all year round!*



*Sit back and enjoy the
radiant glow!*

- Safe, easy installation in minutes creating endless design possibilities for any room
- Convenient option of operating with or without heat allowing you to enjoy your fireplace all year round
- 5,000 BTU heater and fan for even heat distribution (can operate independent of flame control)
- Traditional painted black louvres
- Exclusive PHAZER® log set with glowing embers gives a realistic fire appearance
- Plugs into any 120V electrical outlet
- Zero clearance installation
- No venting required
- Operates on as little as 2¢ per hour!
- 100% efficient
- One year warranty

EF38 Exclusive Features

- 120V 5,000 BTU heater complete with hand held 5 function remote control
- Exclusive night light
- Adjustable flame control

Options/Accessories

- Louvre overlays in polished brass and brushed stainless steel

*Hand held 5 function
remote control*

*Firelog accent light
doubles as a night light*



Shown with painted black face plate and Tranquility mantel in medium oak with stainless steel louvre overlays

EF36 Exclusive Features

- 120V 5,000 BTU heater complete with standard on/off hand held remote control
- Complete with flush black louvres and pull screen
- Patented FLAMATION® technology and a unique design randomly adjusts the flame effect, height and speed creating the illusion of a true wood burning fire.

Options/Accessories

- Dozens of decorative options including louvre overlays, a bay front, bevelled trim kits, bay louvre kits, ornamental insets, trim kits, decorative door kits and cast iron surrounds
- Glass kit



*Shown with webbed arched
door and painted black louvres
with mantel in mahogany*



*Shown with black cast iron
surround and painted black
louvres in drywall installation*



Shown with bay front, 24 karat gold plated ornamental insets



NAPOLÉON ELECTRIC FIREPLACES

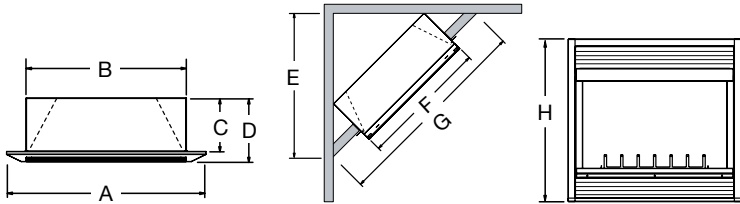
EF38 & EF36 Dimensions

EF38 Dimensions

A = 38"	E = 37 1/4"
B = 30 1/2"	F = 31"
C = 10 1/16"	G = 52 1/2"
D = 12"	H = 32 3/16"

EF36 Dimensions

A = 36"	E = 34 3/4"
B = 23 7/8"	F = 36"
C = 12 5/16"	G = 49 1/4"
D = 13 1/16"	H = 32 1/2"



White



Light Oak



Med Oak



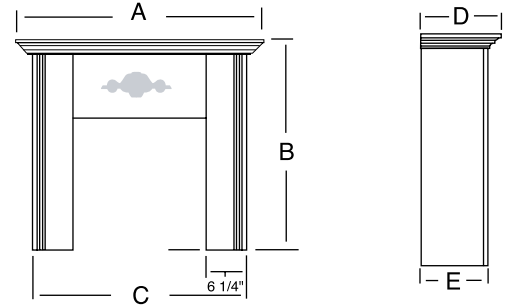
Dark Oak



Mahogany

Tranquility Electric Fireplace Cabinet

This convenient, easily assembled mantel accommodates the EF38 electric fireplace. Available finishes in white, light, medium or dark oak, mahogany and unfinished.

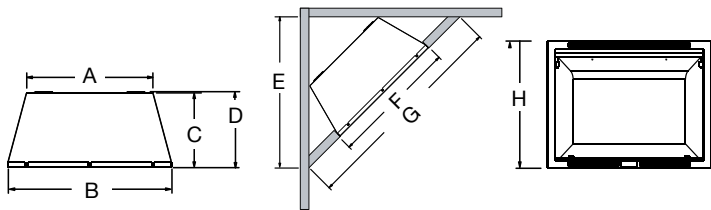


Mantel Dimensions

A = 51 15/16"	D = 19 1/8"
B = 41 13/16"	E = 16"
C = 45 5/8"	

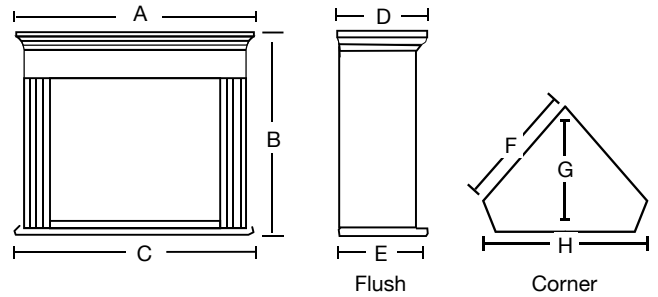
EF31 Dimensions

A = 24"	E = 37"
B = 31 1/4"	F = 31 1/2"
C = 14 3/16"	G = 52 3/8" min
D = 14 3/8"	H = 24 1/8"



EF31 Flush and Corner Cabinet Package

A = 42"	E = 15 7/8"
B = 38 5/8"	F = 33 3/4"
C = 42"	G = 28 1/4"
D = 15 7/8"	H = 47 5/8"



Other Napoleon Products



Fireplace Inserts



Wood Burning Fireplace



Gas Stoves



Cast Iron Gas Stoves



Waterfalls



Vent Free Fireplaces



Electric Fireplaces



Direct Vent Fireplaces



Wood Burning Stoves

Consult your owner's manual for complete installation instructions. All specifications are subject to change without prior notice due to on-going product improvements. Patent US 5,307,801, 5,303,693, 75054 CAN.2,073,411, 2,082,915, 74589, 6944982B2. Patents Pending. Wolf Steel Ltd. Tested in both Canada and the U.S. to the heating standard CSA C22.2 NO 46/UL1278. Products may not be exactly as shown.

Authorized Dealer



- 103 Miller Drive, Crittenden, Kentucky, USA 41030
- 24 Napoleon Road, Barrie, Ontario, Canada L4M 4Y8
- 214 Bayview Drive, Barrie, Ontario, Canada L4N 4Y8
- 7200 Trans Canada Highway, Montreal, Quebec, Canada H4T 1A3

Fireplaces Call: 705-721-1212 • Grills Call: 705-726-4278
www.napoleonfireplaces.com • www.napoleongrills.com

